



ACOUSTI-SEAL®

Movable Walls

MODERNFOLD INC.

AT A GLANCE

Intelligent solutions for sophisticated interior design requirements

Satisfy a variety of needs from basic sight separation to sight and sound separation with Modernfold's line of durable, high quality space division products.

WHY USE MOVABLE WALLS?

- Flexibility
- Space Management
- Sound Control
- Traffic Control and Security Enhancement
- Energy Conservation
- Revenue Generation

Since 1925, Modernfold has produced space division products to facilitate optimal space utilization. Modernfold designs, manufactures, and services Movable Walls, Movable Glass Walls, and Accordion Doors.

- Movable walls transform interior space requirements to meet current and future demands.
- They increase revenue potential by allowing room size to be tailored to each event.
- A large meeting room can be transformed into several small rooms with minimal setup time.

- Maximize space utilization.
- Sound control through a wide range of acoustic ratings without fixed wall constraints.
- Smart Track™—available on all Acousti-Seal® single panel systems—simplifies setup, eliminates operator errors, and shortens setup time. Steel track is durable and reliable—provides low cost of ownership and less downtime.

Modernfold is a dormakaba Company. With Modernfold and DORMA Hüppe Movable Walls, dormakaba is the world's largest manufacturer of movable walls.

A JOB DONE RIGHT

With its reliable, dependable products and the industry's strongest, most dependable distribution system, Modernfold provides confidence that the job is done right. Modernfold factory certified installation and maintenance are available throughout North America and in select international markets.



ACOUSTI-SEAL®
ACOUSTI-SEAL® ENCORE
MODERNFOLD GWS
MOVABLE GLASS WALLS
ACOUSTI-CLEAR®
SOUNDMASTER® ACCORDION
DOORS/PARTITIONS

Contact your local Modernfold Distributor for product selection and layout consultation. To locate your Modernfold distributor or for additional information, visit www.modernfold.com or call 800-869-9685.

ACOUSTI-SEAL® MOVABLE WALLS

MODERNFOLD'S ACOUSTI-SEAL, THE INDUSTRY STANDARD, IS OFFERED IN THREE CONFIGURATIONS.

SINGLE PANEL

Single panel systems provide the ultimate in versatility and flexibility along with offering multiple room setups, changes in the location of pass doors and work surfaces, and remote storage.

- Solves complex layout challenges.
- Satisfies high ceiling requirements with custom engineered panels up to 30-feet high.
- Accommodates wide variations in floor conditions.
- Simplifies setup and storage with the use of the Smart Track™ suspension system.
- Often used in conference, multi-purpose, hospitality, and convention facilities.

PAIRED PANEL

Available in top-supported or floor-supported configurations, the center-hung, paired panels are perfect for straight-line openings and offer quick, easy setup.

- Hinged together in groups of two, facilitating quick, easy setup.
- No auxiliary storage track or support required.
- Economical overhead support of straight-line track.
- Smooth operation.
- SOSS® Invisible Hinges or Heavy Duty Barrel Hinges (lifetime guarantee).
- Simple automatic bottom seals for efficient operation.
- Suited for applications that require exceptional durability, acoustic control, and frequent use.
- Panels are designed to be stored at either or both ends of an opening.
- Frequently used to divide classrooms, meeting rooms, or office spaces.

CONTINUOUSLY HINGED

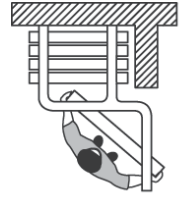
Continuously hinged panels are connected together in a train, extending as one complete unit. Electrically operated for straightline openings and simple operation.

- Setup is quick and effortless.
- Bottom seals are set automatically when the partition is fully extended.
- SOSS® Invisible Hinges or Heavy Duty Barrel Hinges (lifetime guarantee).
- Keyed switches prevent unauthorized operation and integrated safety systems insure safe operation for electric partitions.
- Electrically operated partitions are frequently used in school gyms, classrooms, hotels, and board rooms.





SINGLE PANEL PARTITIONS OFFER THE GREATEST VERSATILITY FOR SPACE DIVISION NEEDS.



For the largest openings, storage in remote pockets, and in complex partition layouts, the single panel is the operable partition of choice.

ADVANTAGES

- Solves complex layout challenges.
- Satisfies high ceiling requirements with custom engineered panels up to 30-feet high.
- One piece panels are available in heights up to 30-feet.
- Simplifies setup and storage with the use of the Smart Track suspension system.
- Accommodates wide variations in floor conditions.



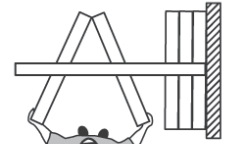
SINGLE PANEL MODEL	931	911
Nominal Panel Thickness	3-inch	3-inch
Operation	Manual	Manual Fire Rated
Frame	Roll Formed & Welded 16-gage Steel	Roll Formed & Welded 16-gage Steel
Skin/Face Options	Gypsum, Gypsum w/Steel Face, MR Board, MDF Board, Steel*	Steel
Finish Options	Vinyl, Heavy Duty Vinyl, Carpet, Fabric, Customer's Own Material*, Full Height Marker/Tack Board, Plastic Laminate, Wood Veneer, Uncovered	Vinyl, Heavy Duty Vinyl, Carpet, Fabric, Customer's Own Material*, Full Height Marker/Tack Board, Uncovered
Maximum Width	Unlimited	Unlimited
Maximum Height*	30-feet	30-feet
STC	28, 41, 47, 50, 52*	45, 50, 52
Hanging Weight (STC-dependent)	6 to 11 lb/sq ft	8 to 11 lb/sq ft

* Custom-engineered solutions available beyond maximum height | * Customers Own Material – must be approved by factory

* Consult your local Modernfold distributor for custom options including: finishes, cutouts, and alternative platforms for pocket space restraints.



PAIRED PANELS OFFER THE MOST EFFICIENT MOVABLE WALL OPTION.



Available in top-supported or floor-supported configurations, the center-hung, paired panels are perfect for straight-line openings and offer quick and easy setup. For convenient and economical space division, the paired panel is the ideal solution.

ADVANTAGES

- Quick setup with movement of two panels at a time.
- Simple automatic bottom seals for efficient operation.
- Smooth operation.
- SOSS® Invisible hinges available.
- Economical overhead support of straight-line track.



Quickly and easily convert a classroom to meet fluctuations in class size.

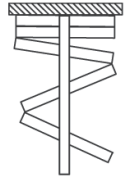
PAIRED PANEL MODEL	932	932FS	912
Nominal Panel Thickness	3-inch	3-inch	3-inch
Operation	Manual	Floor Supported Manual	Manual Fire Rated
Frame	Roll Formed & Welded 16-gage Steel	Roll Formed & Welded 14/18-gage Steel	Roll Formed & Welded 16-gage Steel
Skin/Face Options	Gypsum, Steel*, MR Board, MDF Board	Gypsum, MR Board, MDF Board	Steel
Finish Options	Vinyl, Heavy Duty Vinyl, Carpet, Fabric, Customer's Own Material*, Full Height Marker/Tack Board, Plastic Laminate, Wood Veneer, Uncovered	Vinyl, Heavy Duty Vinyl, Carpet, Fabric, Customer's Own Material*, Full Height Marker/Tack Board, Plastic Laminate, Wood Veneer, Uncovered	Vinyl, Heavy Duty Vinyl, Carpet, Fabric, Customer's Own Material*, Full Height Marker/Tack Board, Uncovered
Maximum Width	Unlimited	80'-g"	Unlimited
Maximum Height*	18-feet	12-feet	18-feet
STC	52, 50, 47, 41, 28*	50, 47, 41, 28	52, 50, 45
Hanging Weight (STC-dependent)	6 to 11 lb/sq ft	6 to 8 lb/sq ft	8 to 11 lb/sq ft

* Custom-engineered solutions available beyond maximum height | * Customers Own Material – must be approved by factory

* Consult your local Modernfold distributor for custom options including: finishes, cutouts, and alternative platforms for pocket space restraints.



ELECTRICALLY OPERATED, CONTINUOUSLY HINGED PANELS ARE IDEAL FOR QUICK, EASY SETUP AND BREAKDOWN.



Electrically operated partitions facilitate quick setup time and provide efficient and convenient separation. Electric operation provides automatic setup without the need for manually moving the partitions into place.

All Modernfold electric partitions are designed for simultaneous activation by two keyed switches to facilitate safe operation. Operational safety is vitally important to Modernfold. Modernfold is serious about safety. In addition to the standard built-in mechanisms, a variety of custom options are available, including heat sensitive touch pads, infrared safety systems, and pocket sensors.

ADVANTAGES

- Totally automatic electric operation allows for quick separation.
- Keyed switches prevent unauthorized operation.
- Integrated safety systems insure safe operation.
- One-piece panels are available on continuously hinged partitions up to 28-feet tall.
- SOSS® Invisible Hinges available.



CONTINUOUSLY HINGED ELECTRIC		933E
Nominal Panel Thickness		3-inch
Operation		Continuously Hinged Electric
Frame		Roll Formed & Welded 16/18-gage Steel
Skin/Face Options		MDF Board, MR Board, Gypsum, Gypsum w/Steel Face, Steel
Finish Options		Vinyl, Heavy Duty Vinyl, Carpet, Fabric, Customer's Own Material*, Full Height Marker/Tack Board, Plastic Laminate, Wood Veneer, Uncovered
Maximum Width		164-feet (single), 201-feet (pair)
Maximum Height*		28-feet
STC		52, 50, 47, 41, 28
Hanging Weight* (STC-dependent)		6 to 11 lb/sq ft

* Custom-engineered solutions available beyond maximum height | * Customers Own Material – must be approved by factory

* Consult your local Modernfold distributor for custom options including: finishes, cutouts, and alternative platforms for pocket space restraints.



MODERNFOLD GOES BEYOND THE BASICS TO OFFER SOLUTIONS THAT ENHANCE THE SAFETY AND SECURITY OF THE BUILDING.

FIRE RATED PARTITIONS

- Available in single and paired panel configurations.
- One-hour and two-hour UL fire ratings.



GREEN BUILDING REQUIREMENTS

- Recycled and recyclable content of products available upon request.
- Custom reports available for each installation.
- Custom products with custom contents available to meet the most stringent requirements.





ACOUSTICAL CONTROL

- Sound control designed for specific room environment.
- Independent laboratory testing.
- Acoustic ratings up to 52 STC.

Today, acoustical control is a critical factor in virtually every type of environment. It's important when choosing an operable partition system to consider not only the space and configuration of your application and how the wall operates, but also to check out the wall's acoustical performance. The right wall system, in conjunction with complementing architectural elements, can help produce excellent acoustical control.

When choosing a space division product, questions related to the room-to-room noise reduction requirements have to be answered.

- What degree of acoustical control will you need?
- What does it take to attain it?
- Which wall system is better for your needs?
- What are the architectural elements of the project with which I should be concerned?

Is there a need for the operable partition to provide a sound absorbing surface? Modernfold offers a guide titled *Making a Sound Decision in Movable Walls*, which is designed to answer these and many other questions. To obtain a copy of this brochure or if you have questions, email us at info@modernfold.com or call 800-869-9685.



A VARIETY OF OPTIONS AND ACCESSORIES TO MAKE EACH INSTALLATION UNIQUE.

WORK SURFACES

- Marker boards and tack boards available with no vertical trim.
- Standard 4'x4' and full height or custom sizes available.

WINDOW OPTIONS

- Full height or partial height.
- Factory glazed.
- Custom cutouts for field glazing.

POCKET DOORS

- Acoustic and non-acoustic solutions to conceal panel storage areas.
- Pre-fabricated with jambs and hardware installed.
- Pre-finished with all available finish options or uncovered for field finishing.

PASS DOORS

- Hollow metal or matching construction.
- Single and double configurations.
- Acoustical control.
- One-hour UL fire ratings available.
- ADA-compliant hardware available.
- Optional window openings.
- Door viewer.

ACCESSORIES

- Chair rail.
- Push plates.
- Recessed exit signs.
- Key-locking foot bolt.

LOCKING EXPANDABLE CLOSURE

- Locking Expandable Closure securely separates adjoining spaces.
- Available on Acousti-Seal movable walls with expandable closure panels.
- Universal core accepts standard 5- or 6-pin commercial locks; allows master keying throughout facility.
- Retrofit existing Acousti-Seal movable walls.

SPECIAL LAYOUTS

- Sloped floors.
- Floors with risers.
- Sliding partitions.
- Segmented walls (curved layouts).



A VARIETY OF SKIN AND FINISH OPTIONS TO APPEAL TO THE AESTHETIC AND PERFORMANCE NEEDS OF THE FACILITY.

FINISH OPTIONS

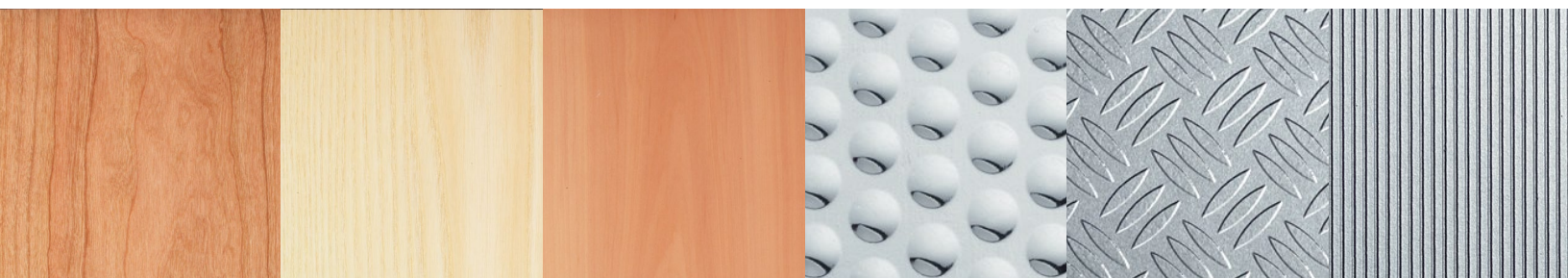
- Standard-weight vinyl wall covering.
- Heavy-duty vinyl wall covering.
- Woven fabrics.
- Ribbed wall carpeting.
- Wood veneers.
- Plastic laminates.
- Customer's Own Material.
- Uncovered for field finishing.

SKIN OPTIONS

- Steel skins available 21-gage to 16-gage.
- Genuine wood veneer plywood.
- NAUF MDF board.
- Moisture-resistant gypsum board.

SKIN TREATMENTS

- Perforated steel skins.
- Resilient padding.
- Full-height marker boards.
- Lead lining for x-ray labs.



HIGH PERFORMANCE, LONG LASTING SUSPENSION SYSTEMS.

Modernfold takes pride in the reliability and durability of its all steel suspension systems—the #14 and #17 are proven to last a lifetime. Smart Track™ technology in conjunction with a durable steel suspension provides for easy operation and low maintenance. Satisfy a variety of needs from basic sight separation to sight and sound separation with Modernfold's line of durable, high quality space division products.

SMART TRACK™

Modernfold continues to expand the programming capability of the #14 and #17 steel track and trolley systems. Solve even the most complex switching challenges without the added expense and maintenance requirements of electric or pneumatic switches. Designs provide added staging and sorting abilities while reducing operational confusion, setup costs, and trolley stress.

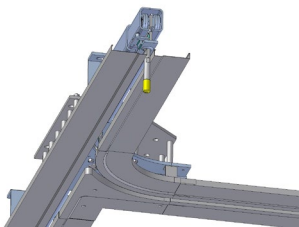
MULTI-DIRECTIONAL SYSTEMS

The RT200 right angle suspension system—available up to 20-feet tall—provides an alternative where grid layouts are a must. The RT100 right angle suspension system is available for heights up to 16-feet. #30 Track Designed for quiet, dependable operation, the #30 track is made of strong structural aluminum. The track is designed to mate with the Acousti-Seal electric partition, but is also available for use on paired panel applications.

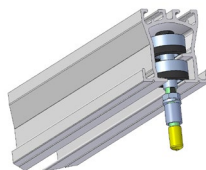
SMART TRACK WARRANTY

20 years on #14 Track

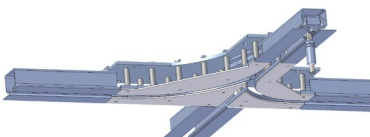
5 years on #17 Track



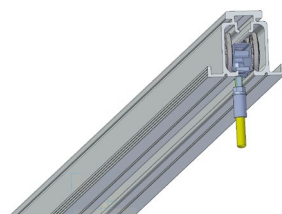
#14 Smart Track



RT200/RT100



#17 Smart Track



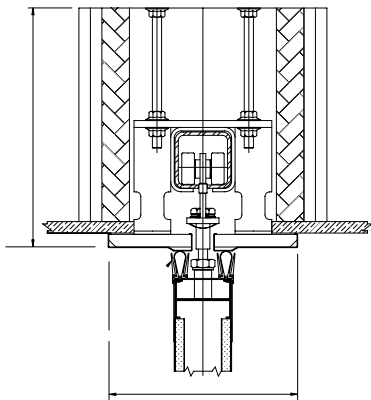
#30



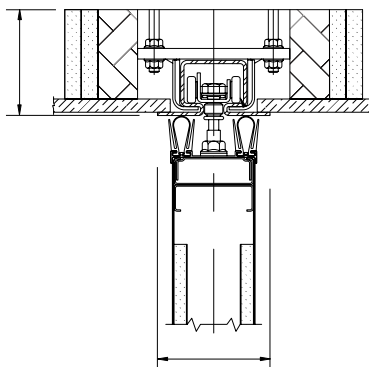
#14 Track with Soffit



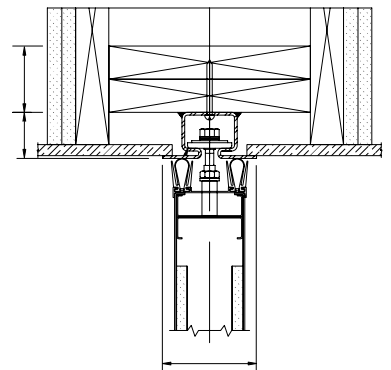
Track Systems



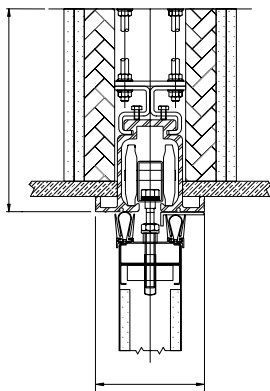
#14



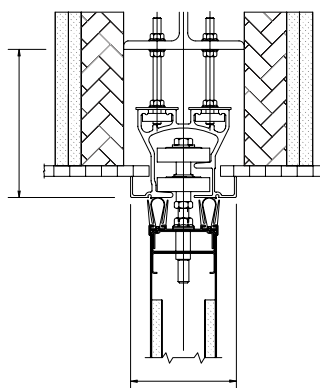
#17



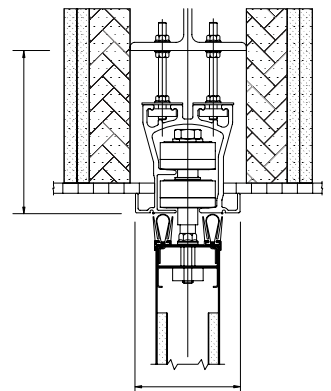
#17 Right Angle



#30



RT100



RT200



215 West New Road
Greenfield, IN 46140

Tel: 800-869-9685

Email: info@modernfold.com
Website: www.modernfold.com